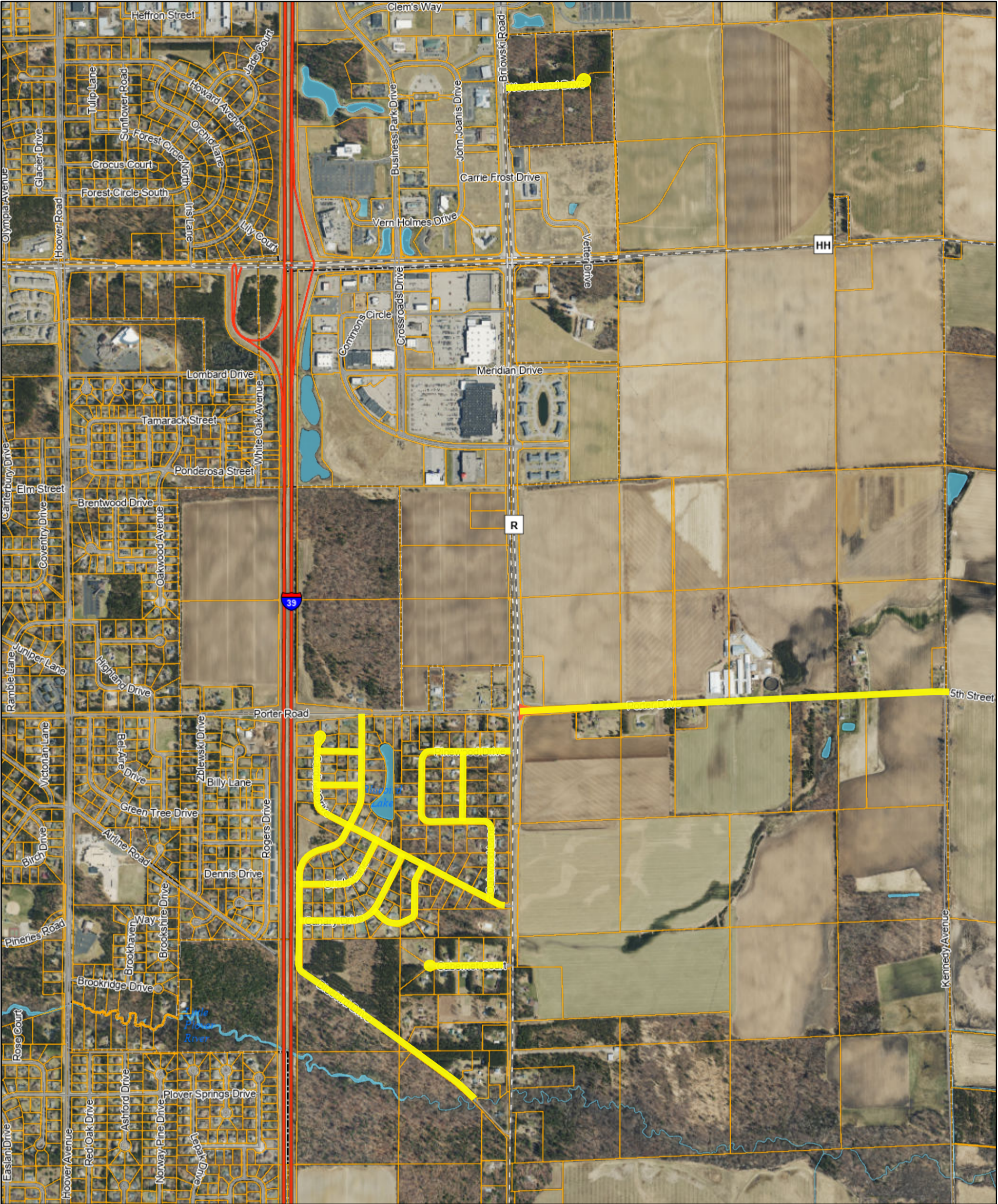


Town of Plover Chip Seal Project



4/21/2023, 2:39:00 PM

Override 1

Override 1

Roadways

Interstate Highway

County Road

Local

On Ramp

Parcel Numbers

Parcel Boundaries

Lakes and Rivers

Streams

Municipal Boundary

2020 Air Photo

Red: Band_1

Green: Band_2

Blue: Band_3

1:18,056

0 0.15 0.3 0.6 mi

0 0.23 0.45 0.9 km

Planning and Zoning Department
©Portage County, WI